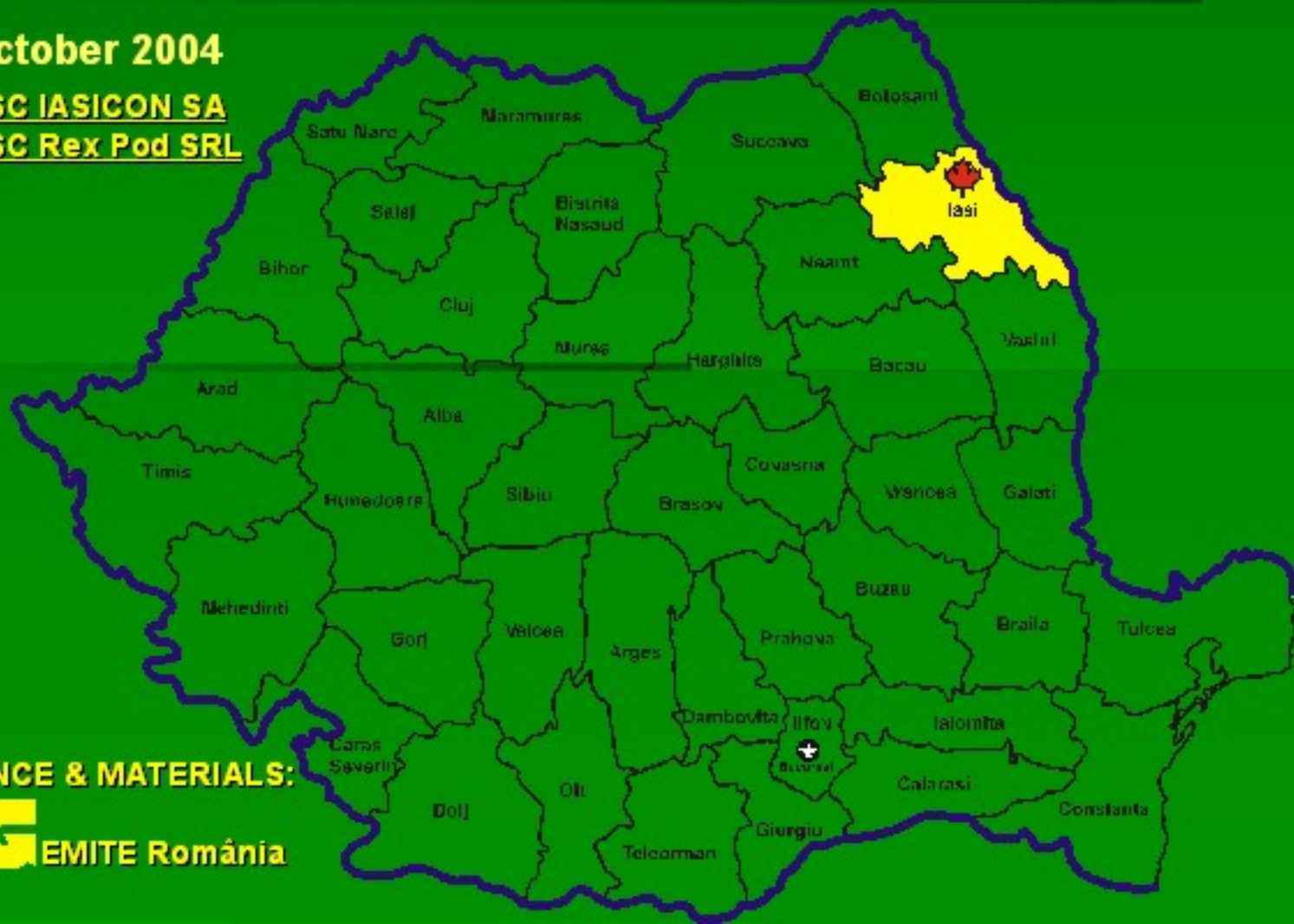


Rehabilitation of the concrete structure from the soccer stadium Emil Alecsandrescu Iasi - Romania

May – October 2004

CONTRACTOR : SC IASICON SA
SUBCONTRACTOR : SC Rex Pod SRL



TECHNICAL ASSISTANCE & MATERIALS:

 **GEMITE România**

Deteriorations of the concrete structure, segregations, corrosion of the reinforcing steel



Deteriorations of the concrete structure, segregations, corrosion of the reinforcing steel



Steel protection and surface priming with Fibre Prime, obtaining for repairs over 3 MPa adhesion to the surface.



Local patches with high performance, polymer modified and fiber addition in the repair material Fibre Patch OV



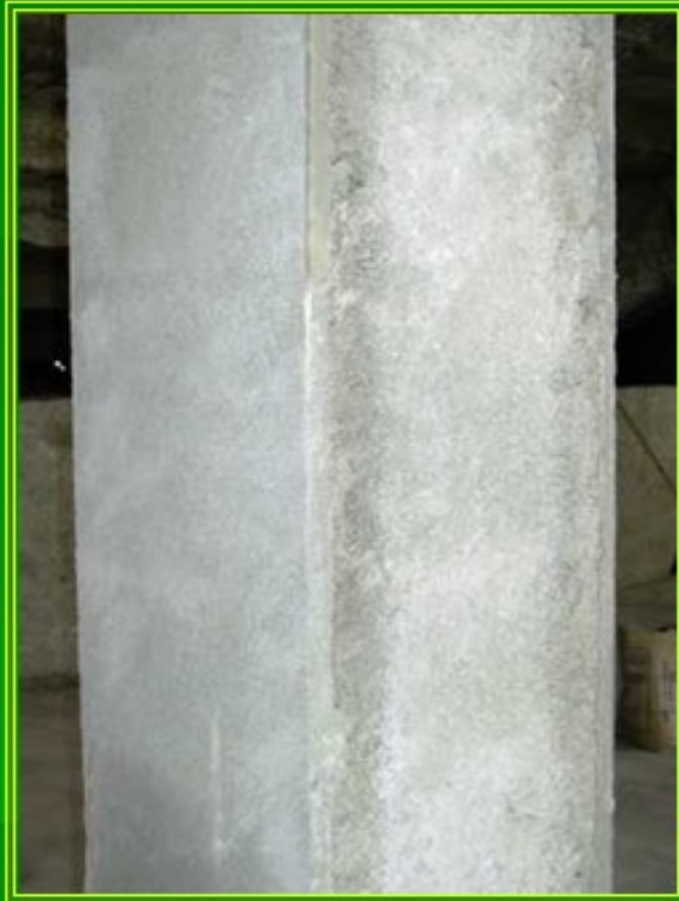
**Preparing the columns for shootcrete,
priming the whole surface with Fibre Prime.**



**Shootcrete the surface:
Spray Con WS ST, micro silica and polymer modified mortar
reinforced with fibers.**



Surface aspect after shootcrete



Columns waterproofed and finished with Gem Plast TC modified for elasticity with the acrylic additive Adi Con BAAC